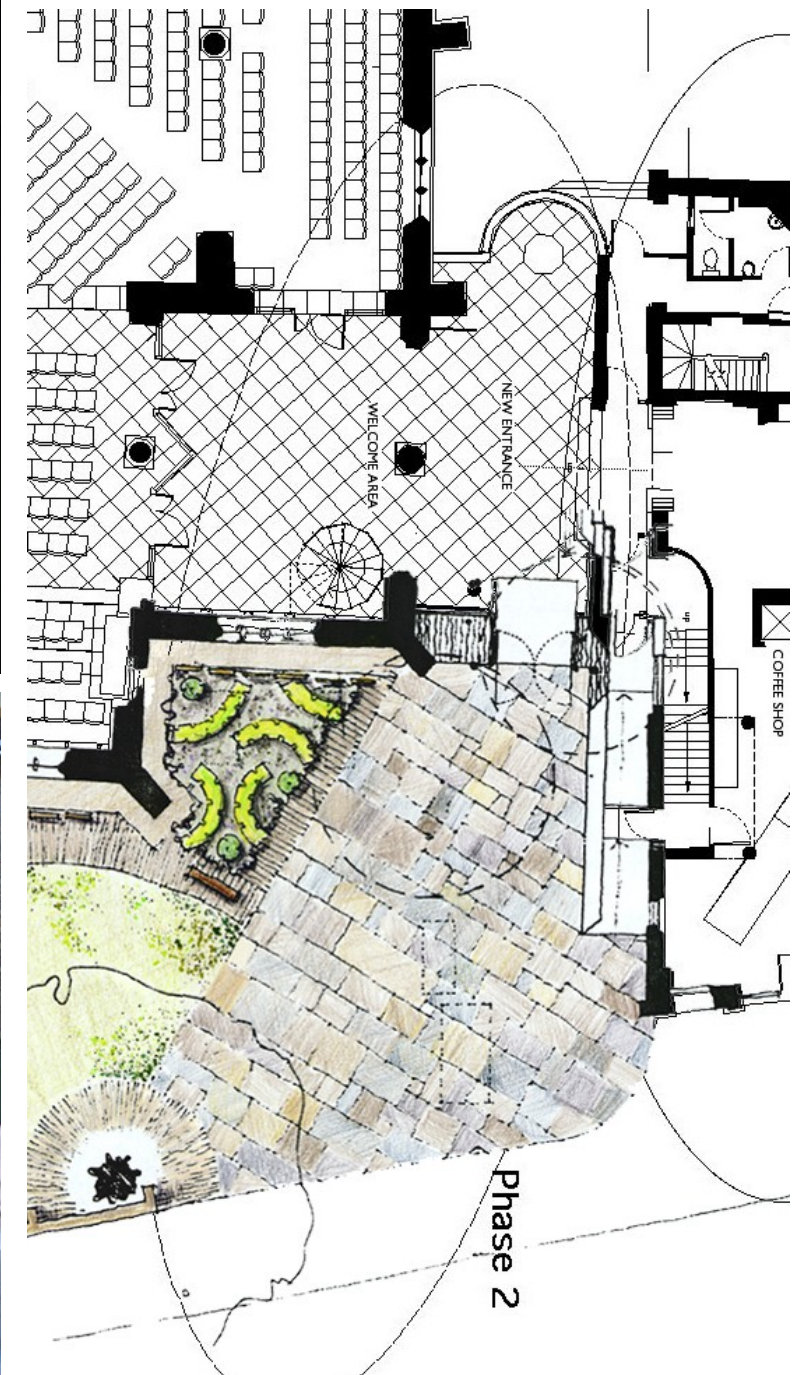


# NEW ENTRY BUILDING CONCEPT TO COMPLETION St Aldates Church, Oxford, UK

This new entry building formed stage 2 of the St Aldates reordering project. It involved creating a new entry to the church facing the main city street to replace the previous entry that was down a dead-end side street

- Previously fenced-off graveyard was opened-up to create a public refuge and paved approach to the new entrance, reinforcing the sense of welcome.
- New stone arches were created in the north wall of the South chapel mirroring the chapel / chancel arches
- The new entry and the south chapel together form the welcome area with a prayer chapel located above the south chapel
- Frameless glazing within the chancel and north aisle arches separates this space from the main body of the church.
- The entry building is constructed from glass, stainless steel and copper with limestone walling and flooring
- The contemporary architecture of the new entry presents the church's life and message as relevant to society today



project datasheet

Studio B Architects t. 03 9486 4425 [www.studiob.net.au](http://www.studiob.net.au)