

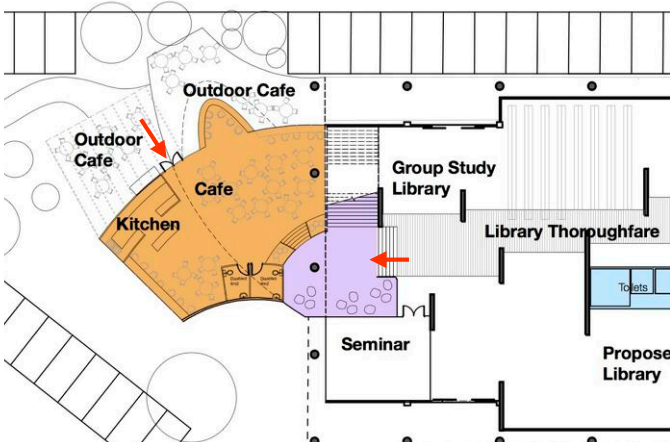
# UNIVERSITY TEACHING BUILDING MASTERPLAN & CONCEPT DESIGN Melbourne School of Theology

## Description of complex:

- Adaptation of office, distribution and warehouse building into tertiary teaching facilities.
- Occupied by the college since 2011, it will significantly increase its student and staff numbers with the integration of Eastern College on the same site.
- The master plan anticipates 4 development stages commencing with enlargement of the present chapel and new staircase - now complete.
- The 2nd stage will include a new extension to provide a student centre and public café.
- The 3rd stage will relocate the main entrance and upgrade the current interior.
- The 4th stage will include a new auditorium, specialist teaching facilities and additional offices.

## Design features include:

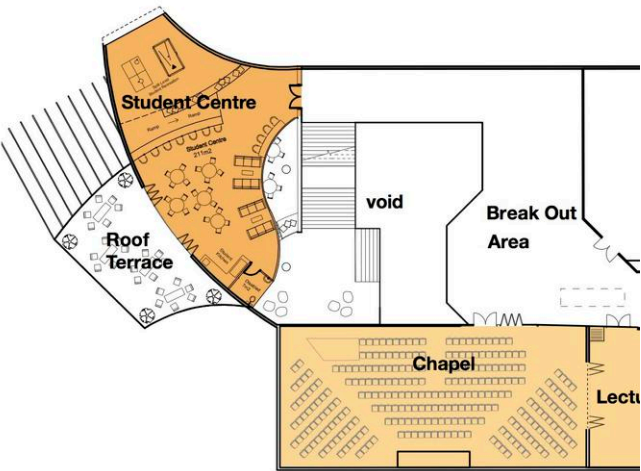
- Distinctive new café and student centre addressing the major road junction.
- Relocated main entrance to the building in a central position to expanded complex.
- Enlarged and replanned library/resource centre to accommodate volumes from 2 libraries.
- New 1000 seat auditorium and foyer with supporting rooms and kitchen can be separately accessed as a standalone conference centre.
- Potential complimentary enabling development on the site.



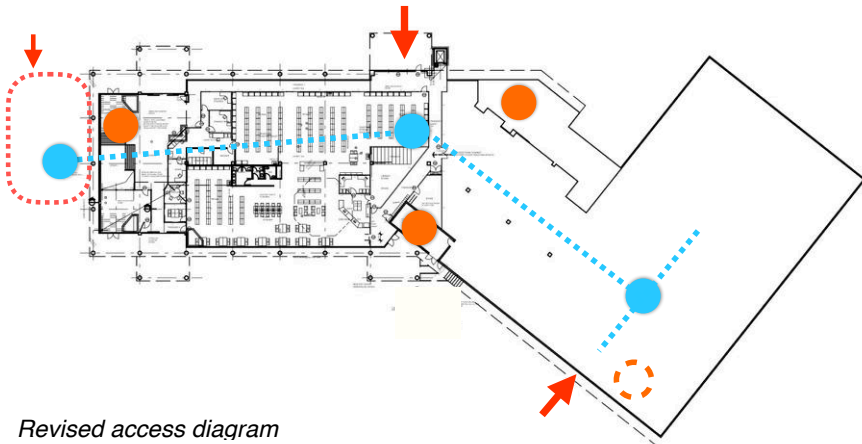
Proposed cafe at Ground Floor



Proposed site plan indicating potential enabling development



Proposed Student Centre at First Floor



Revised access diagram



project datasheet

Studio B Architects t. 03 9486 4425 [www.studiob.net.au](http://www.studiob.net.au)