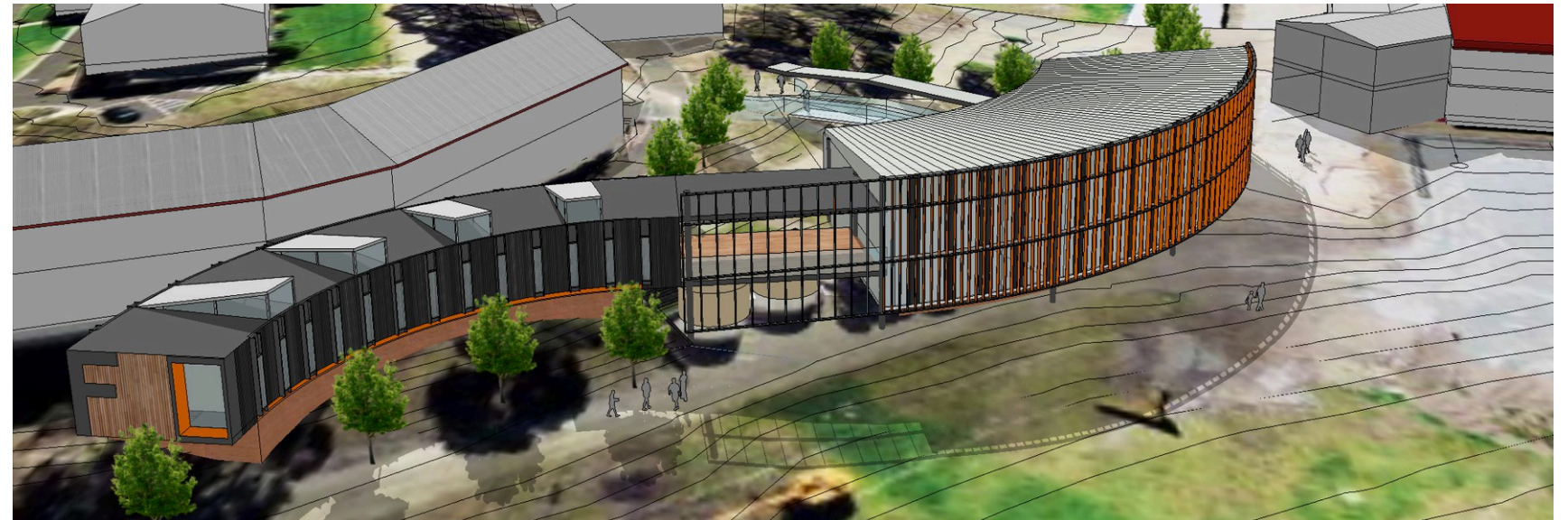


NEW SENIOR SCHOOL CENTRE CONCEPT TO COMPLETION

Flinders Christian Community College, Carrum Downs, Vic

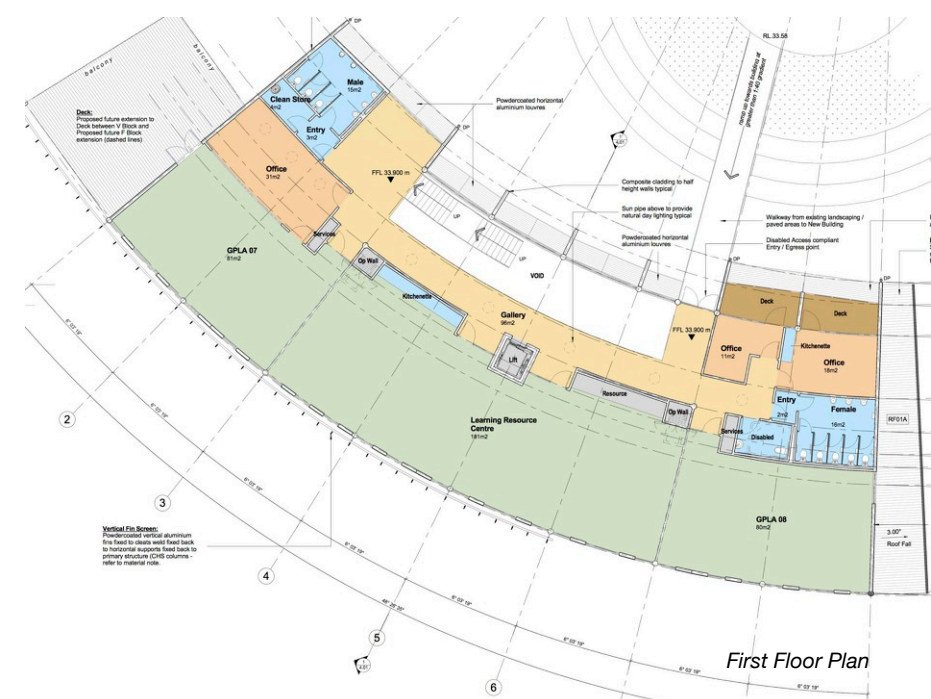
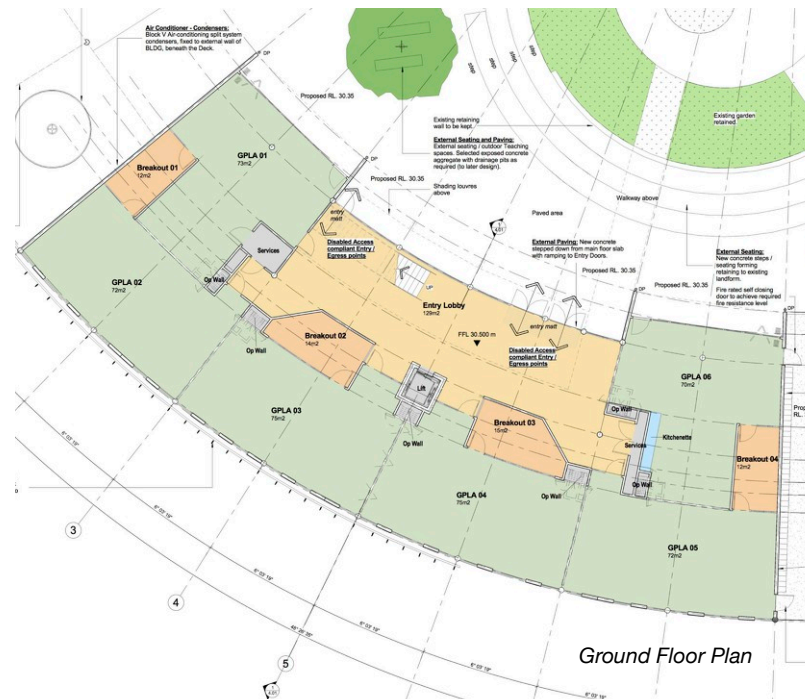
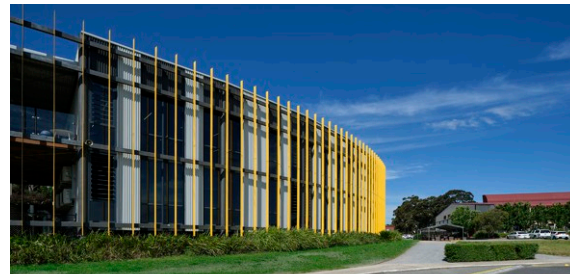
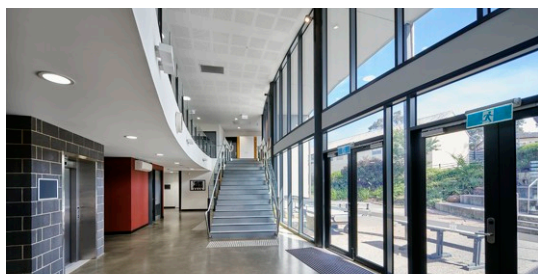


Description of complex:

- New flagship building for year 11 and 12 students.
- Takes advantage of sloping site by establishing entry to the building at 1st floor level by bridge from an existing pathway.
- All teaching spaces can be reconfigured by operable teaching walls.
- Includes reception point on entry with integrated staff offices.
- Flexible teaching spaces intended to prepare students for tertiary education.

Design features include:

- Sustainable design includes naturally ventilated atrium on the north side incorporating shading from summer sun but allowing solar benefit in winter.
- Takes advantage of south-west views over playing field.
- Vertical louvres protect against late afternoon summer sun.
- Building orientation and shape provides outside teaching space at ground floor protected from prevailing winds.
- Building is designed to allow for future expansion of adjoining laboratory building.
- Social gathering spaces provided within the atrium.
- Tight cost control kept cost within 2.5% of net tender with no contingency



project datasheet

Studio B Architects t. 03 9486 4425 www.studiob.net.au