

SCIENCE HUB, RESOURCE CENTRE & GYM MASTERPLAN & CONCEPT DESIGN

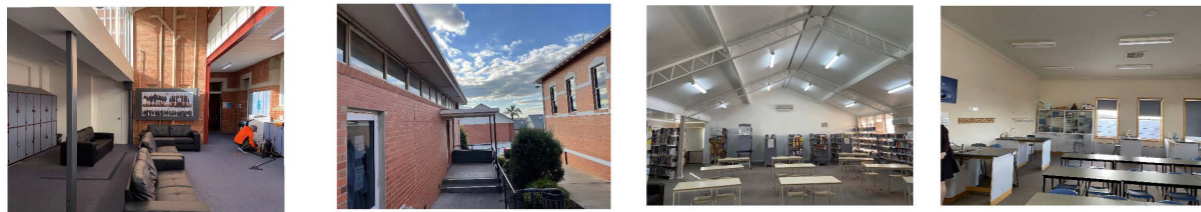
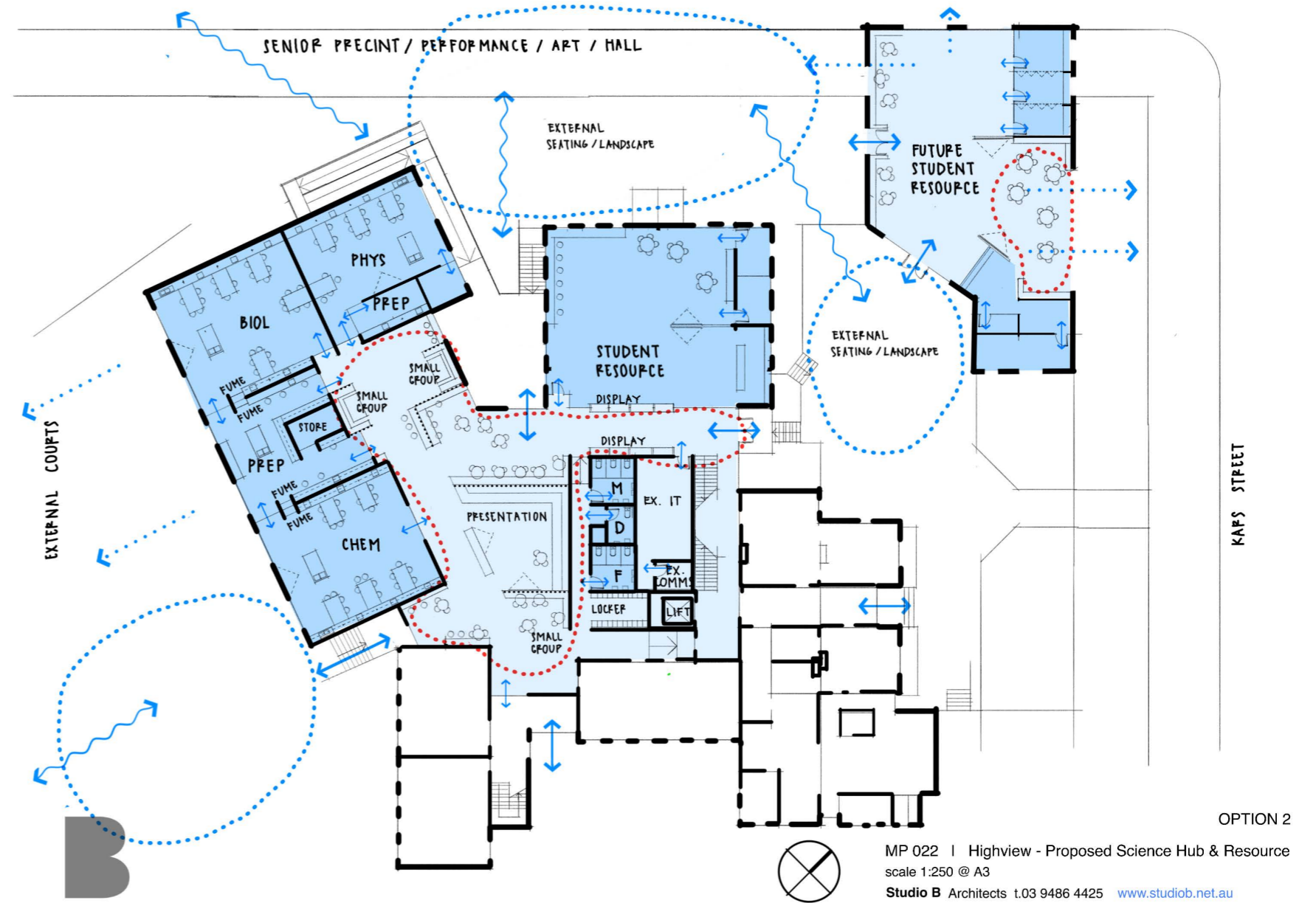
Highview Christian College, Maryborough

Description of complex:

- New **Science Hub** for year 9–12 students.
- New Chemistry lab and modern presentation space
- New **Student Resource Centre** including Library and offices.
- Proximity to street makes the complex accessible to the community.
- Includes reception point on entry with integrated staff offices.
- New **Gym** and offices. Allowance for potential expansion.

Design features include:

- Takes advantage of east-west views and creates activated internal courtyards.
- Vertical louvres protect against late afternoon summer sun.
- Building orientation and shape provides outside teaching space at ground floor protected from prevailing winds.
- Building is designed to allow for future expansion.
- Facade works and alteration to the roof.



project datasheet

Studio B Architects t. 03 9486 4425 www.studiob.net.au