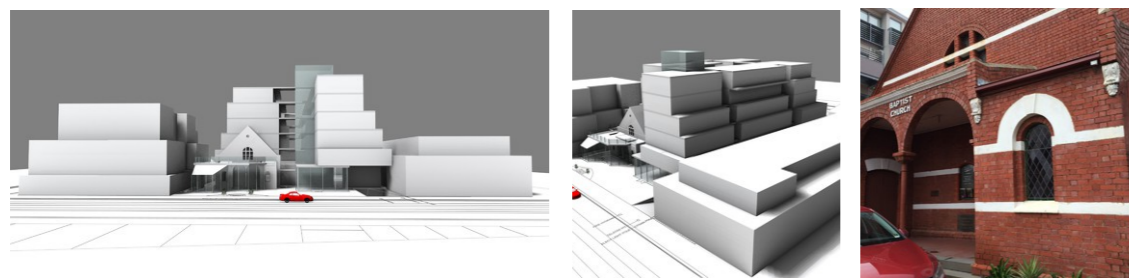
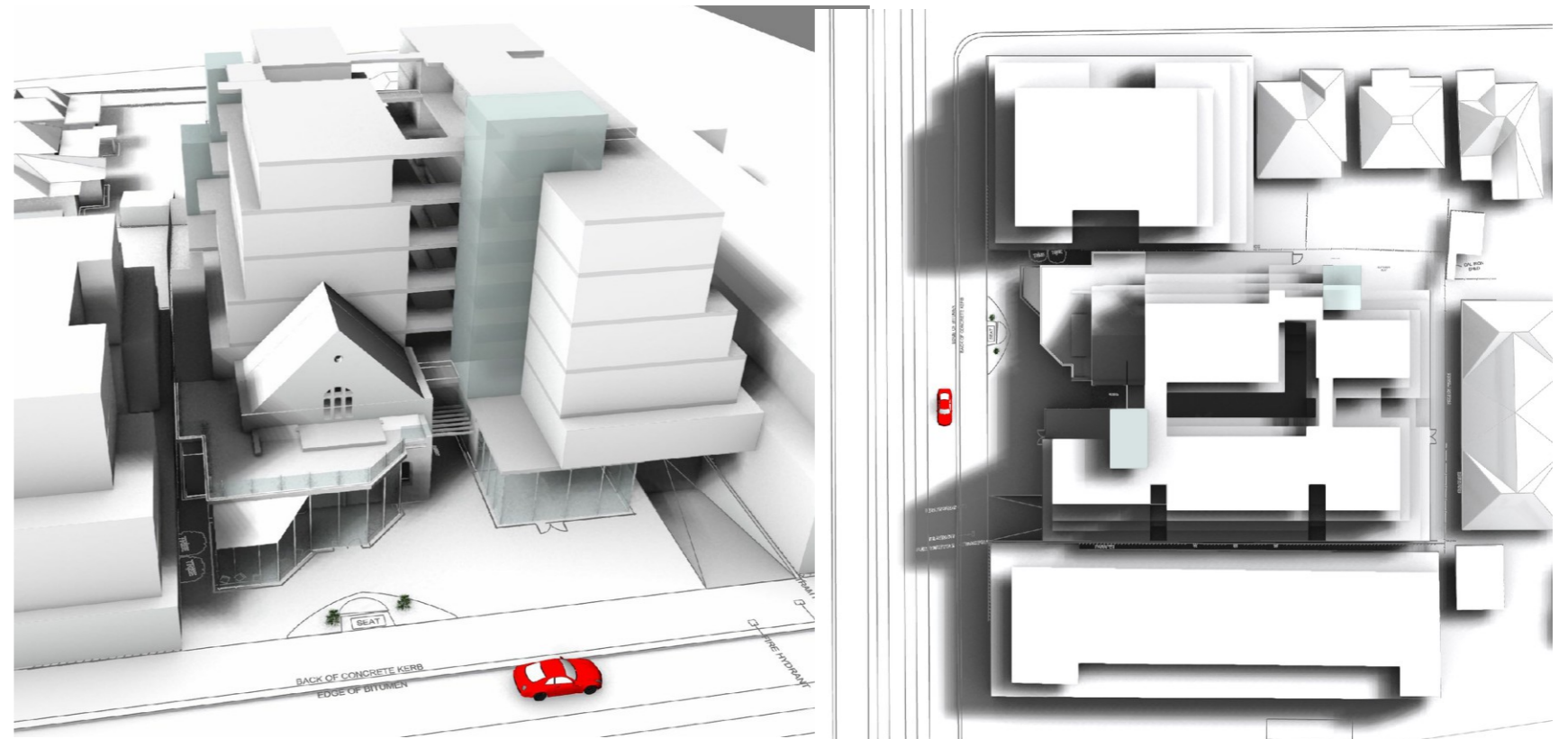


CHURCH AND APARTMENTS ENABLING DEVELOPMENT MASTERPLAN Northcote Baptist

This thriving Chinese and English speaking Baptist Church community occupies a simple heritage building and vacant adjoining lot on Northcote High Street. Studio B facilitated a Missional Identity exercise to identify the churches future needs. A development investigation then took place to see if new church facilities could be created and be substantially funded from the apartment development potential of the site on the upper levels.

Design features include:

- Proposed six-storey development with church, retail and café on ground floor and 48 apartments above. Frontage element of existing historic building to be retained and incorporated as café.
- Pedestrian Plaza to be created at the street frontage around the tram stop.
- Café will act independently during the week and as. The hospitality focus following worship.
- Basement car parking to serve apartments and church.



project datasheet

Studio B Architects t. 03 9486 4425 www.studiob.net.au