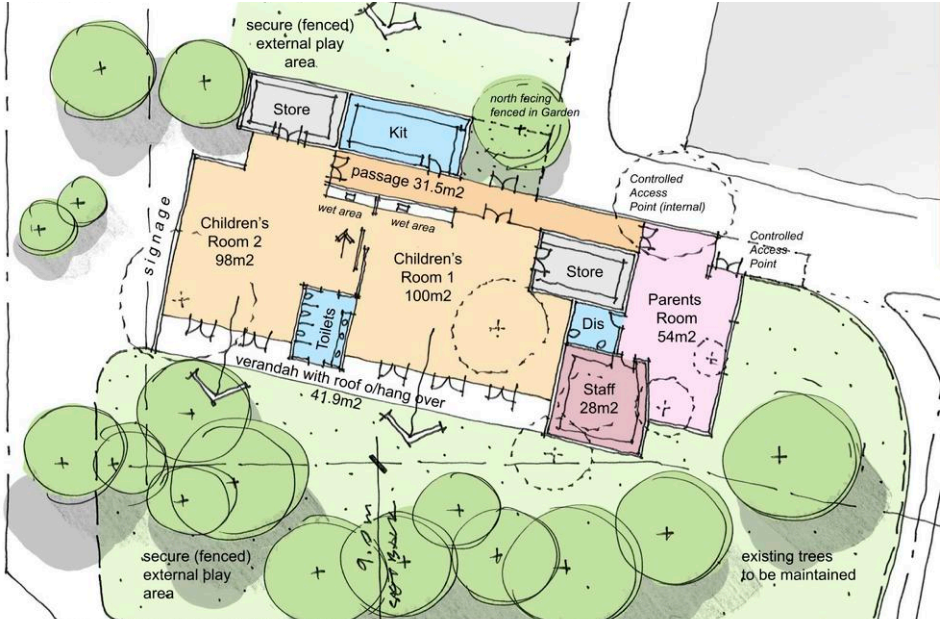


# EARLY LEARNING CENTRES CONCEPT DESIGN Flinders Christian Community College

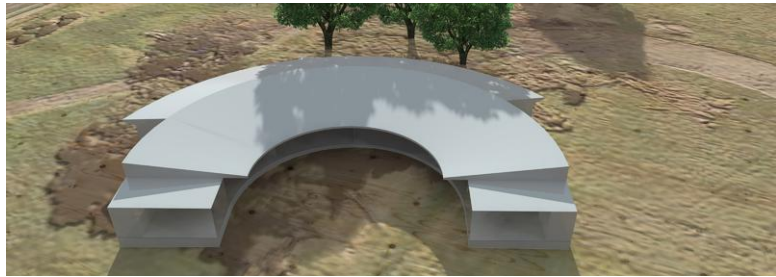
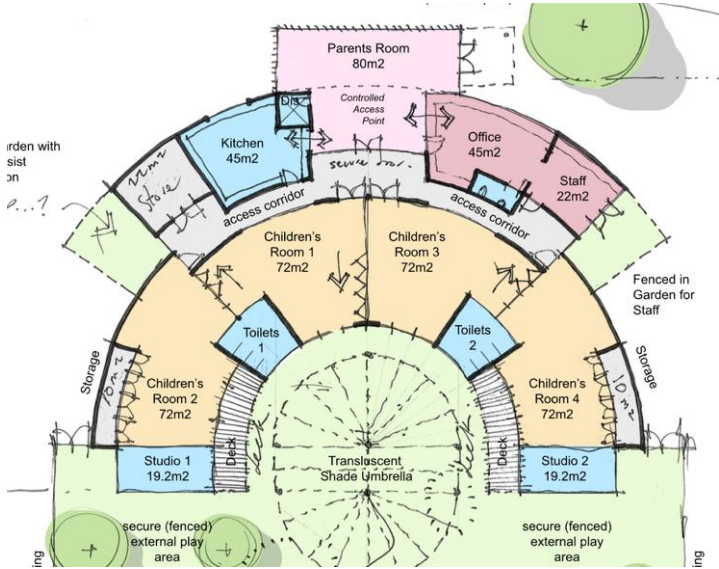


Appointed to provide architectural services for 3 school campuses:

- 2 Early Learning Centres
- New year 10 Building and laboratories
- Design review for other building proposals in progress
- External spaces and masterplan review

Design features for ELCs include:

- Parents drop-off and socialising space
- Sustainable design solutions integrated from concept stage
- Response to microclimate to create sheltered external play
- Easily linkable spaces with direct toilet access
- Direct access to outside play from children's rooms
- Easy shared surveillance inside and outside
- Sense of enclosure and embrace



project datasheet

Studio B Architects t. 03 9486 4425 [www.studiob.net.au](http://www.studiob.net.au)