

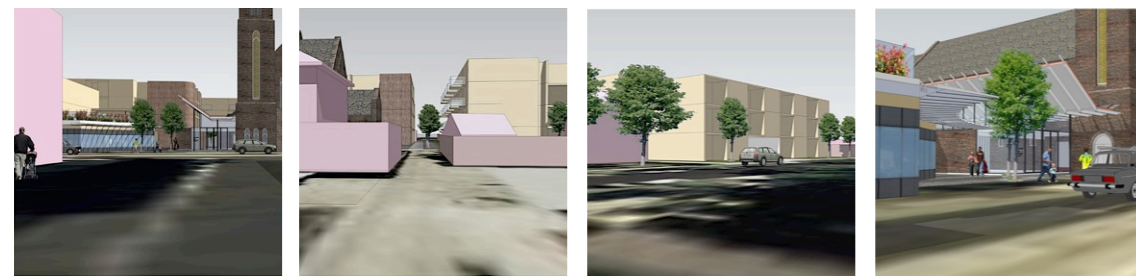
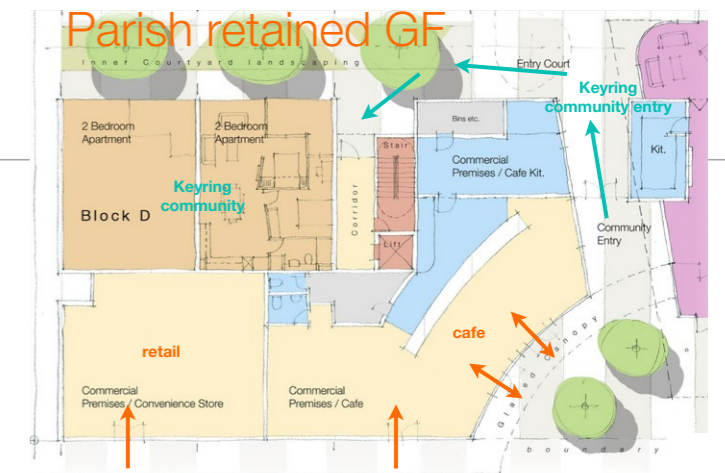
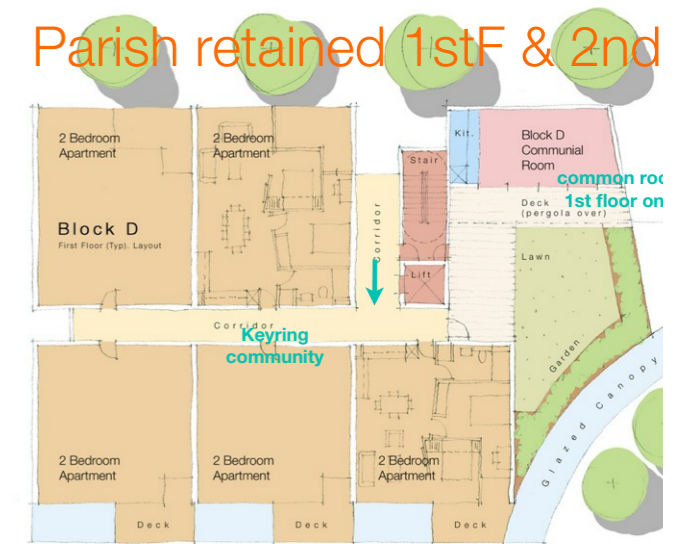
NEW HOUSING AND CHURCH EXTENSION FEASIBILITY MASTER PLANNING Holy Cross, South Caulfield, Vic

Missional Identity masterplanning exercise creating residential development of a vacant urban site located on a regional shopping street

- The development proposed served this Catholic parish by both realising land value for redeployment in mission and gathering a new community on the doorstep of the church
- Property values were investigated with a development consultant in order to identify the optimum development return
- Community facilities will be established alongside the church to serve both the community and the parish
- Part of the original presbytery was converted to a children's centre.

Design features include:

- Creating a new Plaza with cafe and outside seating set back from the pavement and focused upon heritage church building
- Achieving 12 rental units and 2 retail units to be retained by the parish in return for a long lease on the land
- Retained units will accommodate people with mild intellectual disability as a "keyring" community in accordance with parish missional identity



project datasheet

Studio B Architects t. 03 9486 4425 www.studiob.net.au