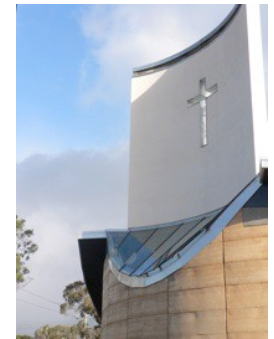
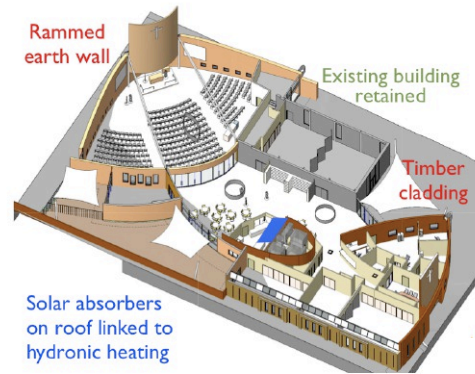


NEW CHURCH - SUSTAINABILITY CONCEPT TO COMPLETION St Alfred's Church, Blackburn North



Core sustainability agenda:

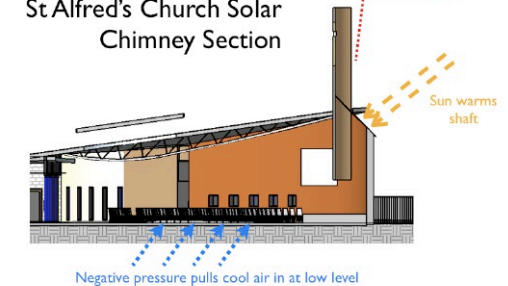
- Minimise carbon emission and energy use
- Avoid air conditioning
- Minimise water usage

Sustainable features in the St Alfred's project:

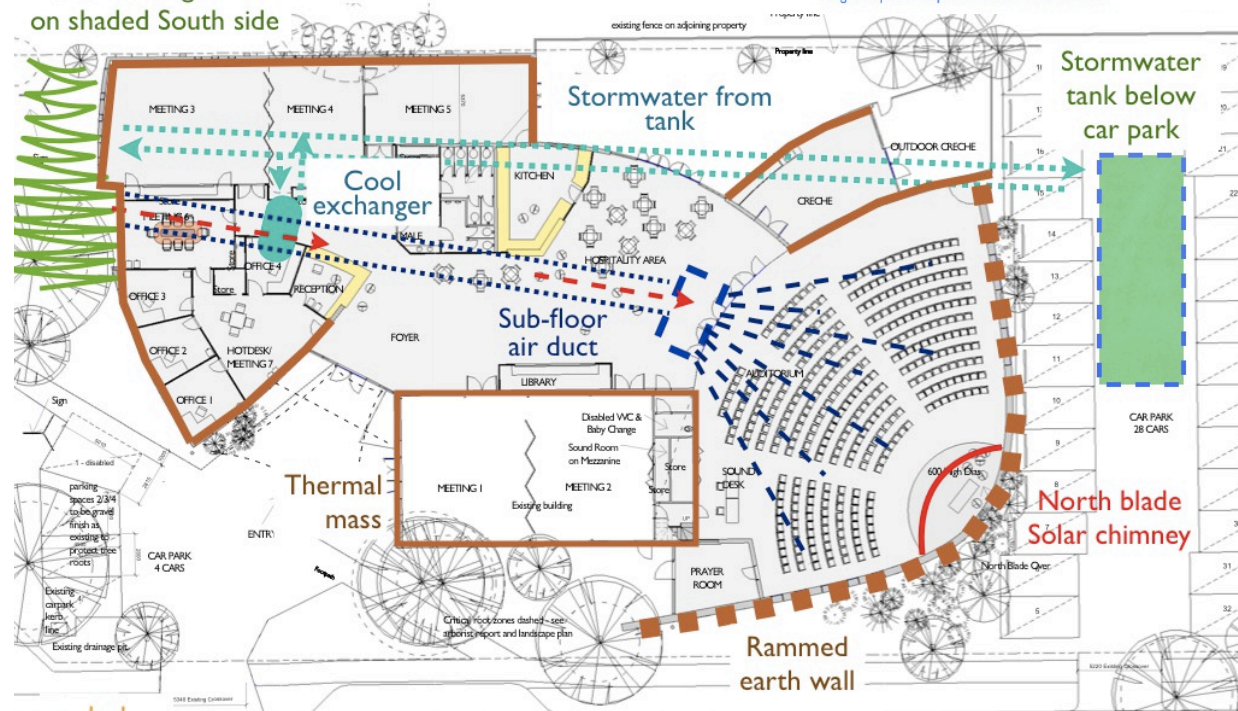
- Activated thermal mass in concrete floor, walls and rammed earth walling
- Sub-floor cooling tunnel with "cool" exchanger charged by stormwater from tank below car park
- Thermal chimney activated by sun falling on NE facing glazing at the base of the chimney. Negative pressure in the auditorium draws air through the floor duct system.
- Materials with low embodied energy selected
- Stormwater from roofs collected for use in WCs and landscape. Also made available for irrigating adjoining public tennis courts



St Alfred's Church Solar Chimney Section



Moist Planting on shaded South side



project datasheet

Studio B Architects t. 03 9486 4425 www.studiob.net.au