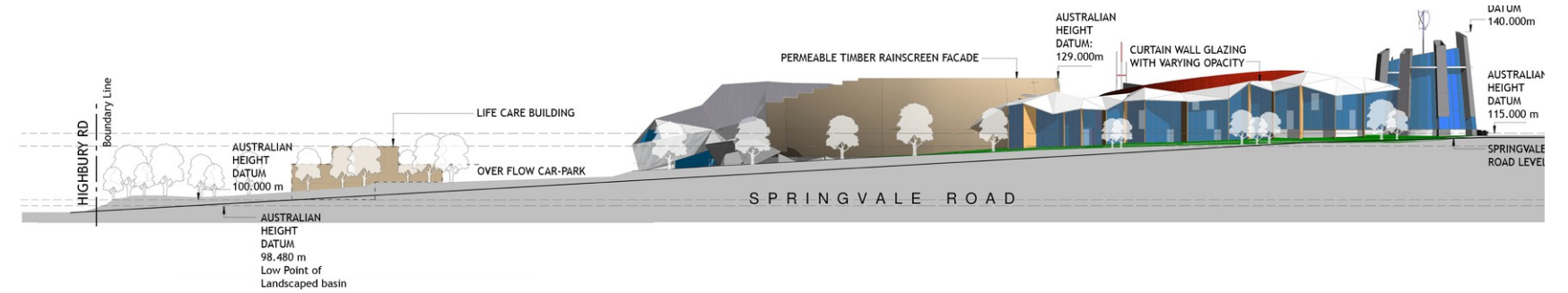


CHURCH COMMUNITY COMPLEX MASTERPLAN Crossway, East Burwood, Vic



Crossway is the largest Baptist Church in Australia. It commissioned Studio B to review its property on Springvale Road, East Burwood to meet its growing membership needs. The enlarged facilities include:

- Integrated complex for worship, conference, drama, concerts, meetings, counseling and incorporating performance cafe, youth centre, children's centre, family cafe with indoor play centre, sports hall, health centre, gymnasium and offices
- 2500 Seat Auditorium
- 1100 Seat Auditorium (existing)
- 500, & 300, seat Auditoria
- 250 seat Chapel (existing)
- Integrated foyers, baptistry and church street

Design features include:

- The project is based upon sustainable design principles with a brief to incorporate elements with a pay back within 10yrs. It will be developed in stages as the membership grows from its current 4000 to 10,000/wk
- The urban design principles which include a tall landmark ESD tower were developed in consultation with the council's planning authority.

