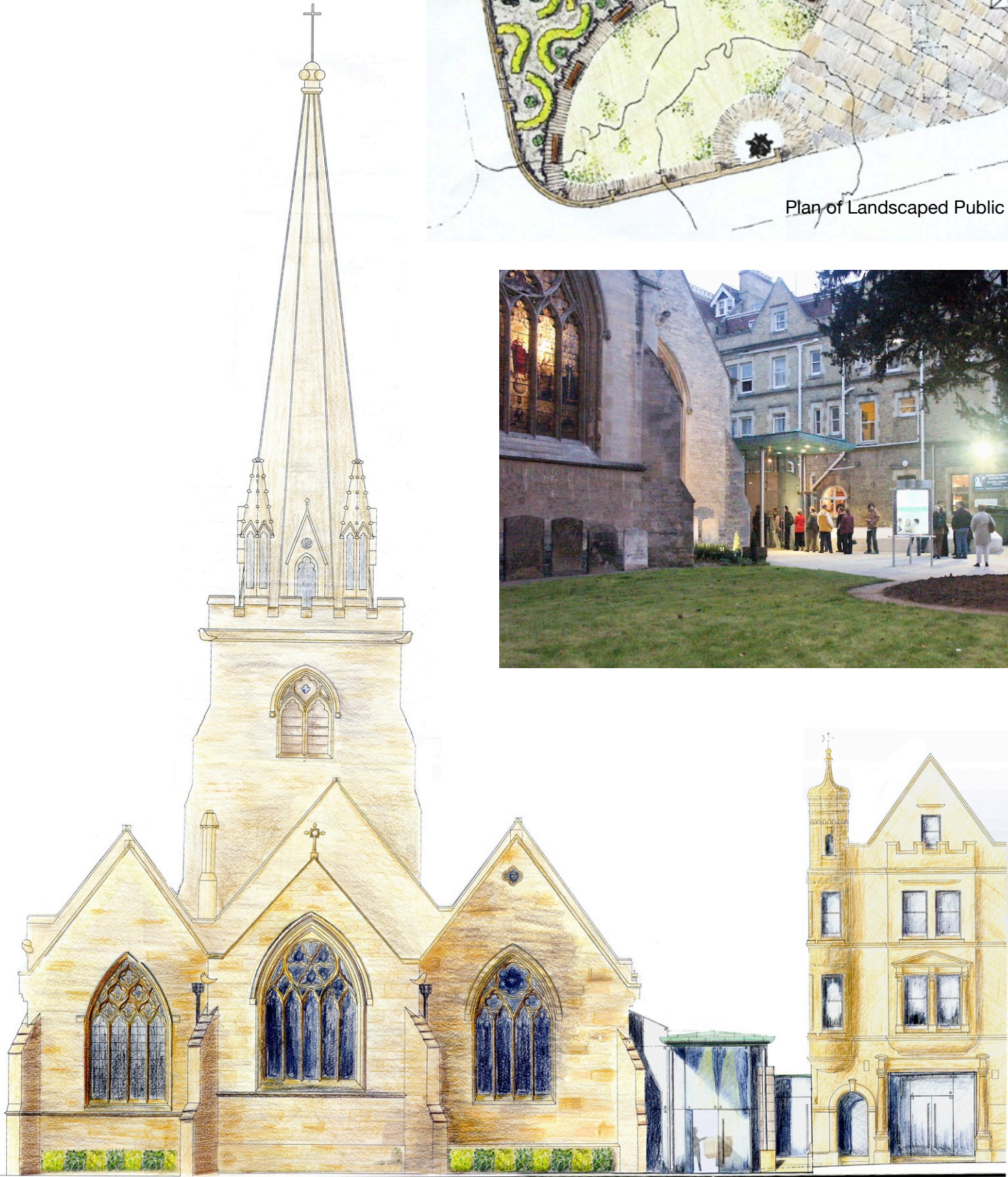
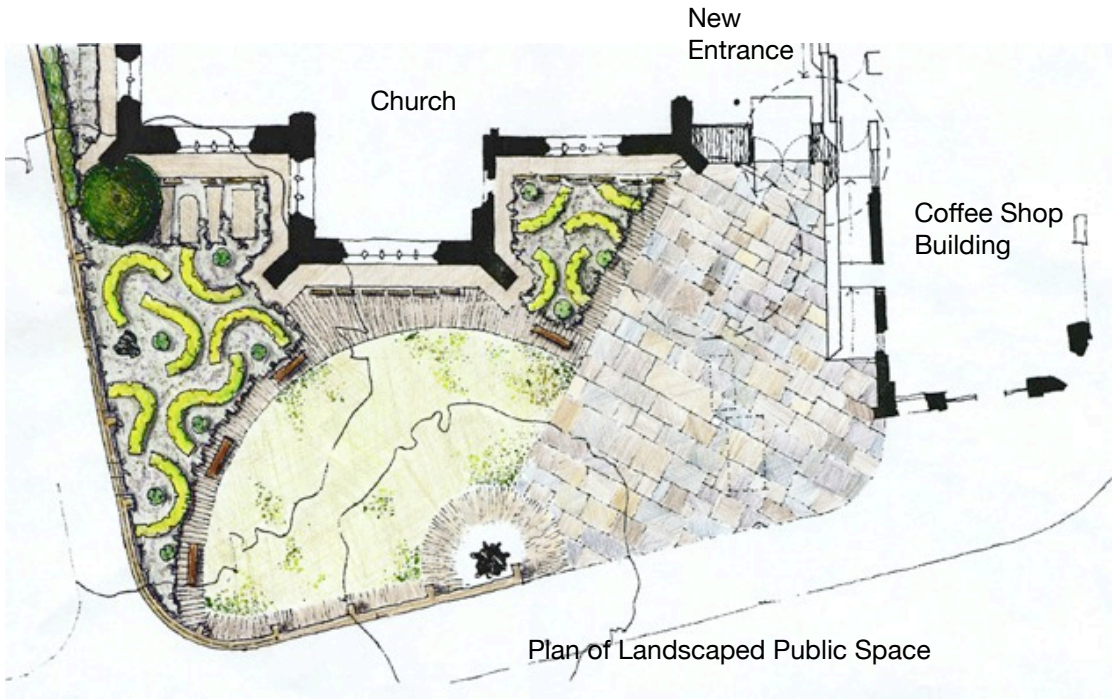


NEW LANDSCAPED PUBLIC APPROACH & ENTRY
CONCEPT TO COMPLETION
St. Aldates Church Oxford

St Aldates required a new entrance location to engage with the street and community whilst creating a sense of welcome. Landscaping provided an opportunity to further promote this as well as to provide a place for tourists and shoppers to relax and find refuge.

Design features include:

- Re-planned church yard created a new landscaped public space with seats in the heart of the city and highlights the approach to the new church entrance. This replaced the fenced-off graveyard
- Existing Yew tree was retained as pivotal feature and its crown lifted to allow views below the branch spread
- Design of new entrance in glass and copper provides a simple foil to the neo-Gothic Victorian church building and the neo-Classical coffee shop terraced building.



project datasheet

Studio B Architects t. 03 9486 4425 www.studiob.net.au